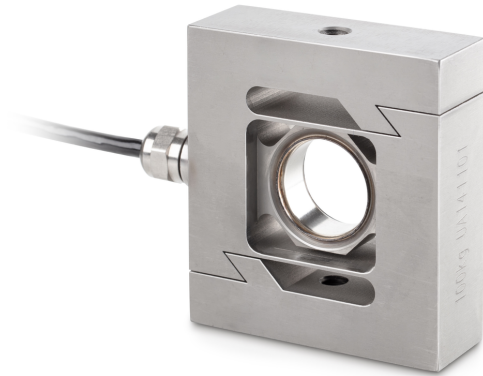


# KERN CS 100-3P2

# KERN

"S"-Load/force measuring cell made from stainless steel



## Construction

|                              |                  |
|------------------------------|------------------|
| Design                       | "S" shaped cell  |
| Dimension (W×D×H)            | 92×86×50 mm      |
| Material                     | stainless steel  |
| Cable length                 | 6 m              |
| Mounting - force application | Threaded hole M8 |
| Mounting - force dissipation | Threaded hole M8 |

## Functions

|                                 |      |
|---------------------------------|------|
| IP protection - complete device | IP68 |
|---------------------------------|------|

## Environmental conditions

|                           |        |
|---------------------------|--------|
| Use temperature [Min]     | -10 °C |
| Use temperature [Max]     | 40 °C  |
| Ambient temperature [Min] | -35 °C |
| Ambient temperature [Max] | 65 °C  |
| Storage temperature [Min] | -40 °C |
| Storage temperature [Max] | 70 °C  |

## Packing & Shipping

|                              |                |
|------------------------------|----------------|
| Readability force [d] (N)    | 1 d            |
| Dimensions packaging (W×D×H) | 205×170×60 mm  |
| Net weight                   | 1,36 kg        |
| Shipping method              | Parcel service |
| Net weight approx.           | 1,4 kg         |
| Gross weight approx.         | 1,6 kg         |
| Shipping weight              | 1,46 kg        |

## Services (optional)

|   |          |
|---|----------|
| Article number for DAkkS calibration (tensile force)                    | 963-162V |
| Article number for DAkkS calibration (compressive force)                | 963-262V |
| Article number for DAkkS calibration (tensile force/ compressive force) | 963-362V |

## Category

|                  |                           |
|------------------|---------------------------|
| Brand            | Sauter                    |
| Product category | Measuring cell            |
| Product group    | Load/force measuring cell |
| Product family   | CS P2                     |

## Measuring System

|  |                        |
|--|------------------------|
| Weighing capacity [Max]                    | 100 kg                 |
| Load cell connection                       | 4-wire                 |
| Load cell OIML class                       | C3                     |
| Load cell - Resolution (verifiable)        | 3000 e                 |
| Load cell - characteristic value - nominal | 2 mV/V                 |
| Load cell - Y-value                        | 12000                  |
| Load cell - Combined error                 | 0,023%                 |
| Load cell - Dead load [Min] (%)            | 0%                     |
| Measuring applications                     | force<br>mass          |
| Load cell - Input resistance - nominal     | 350 Ω                  |
| Load cell - Output resistance - nominal    | 355 Ω                  |
| Load cell - Isolation resistance - [Min]   | 5000 MΩ                |
| Measuring range force [Max] (N)            | 1 kN                   |
| Directions of force                        | tension<br>compression |

## Approval

|         |   |
|---------|---|
| CE mark | ✓ |
|---------|---|

# KERN CS 100-3P2

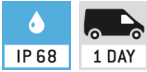


"S"-Load/force measuring cell made from stainless steel

## Pictograms

### STANDARD

---



### OPTION

---

